

New!

Class II treatment made easy and reliable!



Introducing the Williams* appliance



*Invented by Dr. Michael Williams, Gulfport, Mississippi. US patent no. 5,919,042. Mexican Patent no.1999527 and 224167 and other international patents.

The Williams* appliance for Class II treatment

CE 0297

Description

The new Williams appliance makes Class 2 treatment really easy. The unique threading design allows for incremental advancements

of the mandible. A key is placed in the holes built into the tube thus allowing for chairside activation and advancement of the mandible.

No shims, no removal of the appliance, no disengagement needed, just turn the key!

Advantages

1. Shimless design: Less potential for accidental aspiration of loose parts
2. Incremental advancement capabilities: Research indicates that incremental advancement of the mandible is superior
3. Allows clinician to make all adjustments chairside
4. Allows for asymmetrical advancements to the accuracy of 1/8mm per side
5. Due to the unique threading design, allows both right and left handed clinicians to activate both sides without having to reposition the patient
6. Activations make it more difficult for patient to disengage from the appliance as the working lengths of the muscles increase. Shim designs actually disengage easier as the shims are added. Our design has the tube getting longer as the mandible advances thus making disengagement more difficult
7. Sturdy design which will not bend under torque or tension like other Class II devices
8. No storage of different sizes of shims or going into laboratory and measuring for the right size shim needed

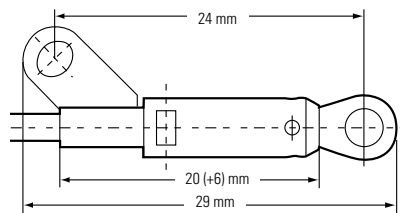
Intraoral patient examples



Technical data

outer diameter:	4.5 mm
thread lead:	0.8 mm per full turn
activation range:	+ 6 mm
nominal size*	20 mm
distance bore centre to bore centre*	24 mm
total length*	29 mm

* + 6 mm activation



	Description	Order-No
	1 patient kit	321-0100

	Description	pieces	Order-No
	guidance tube with sleeve right	1 kit	321-0107
	guidance tube with sleeve left	1 kit	321-0108
	inner screws	10	320-0104
	housing nuts	10	320-0105
	rods for Williams-appliance	10	320-0106
	hexagon key	1	320-0109

*Invented by Dr. Michael Williams, Gulfport, Mississippi. US patent no. 5,919,042 and other international patents