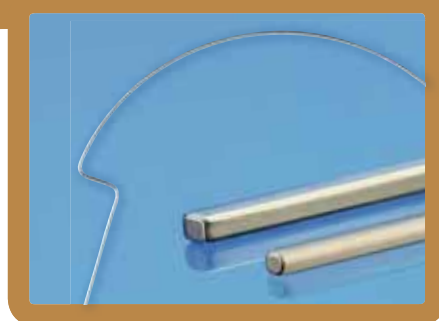
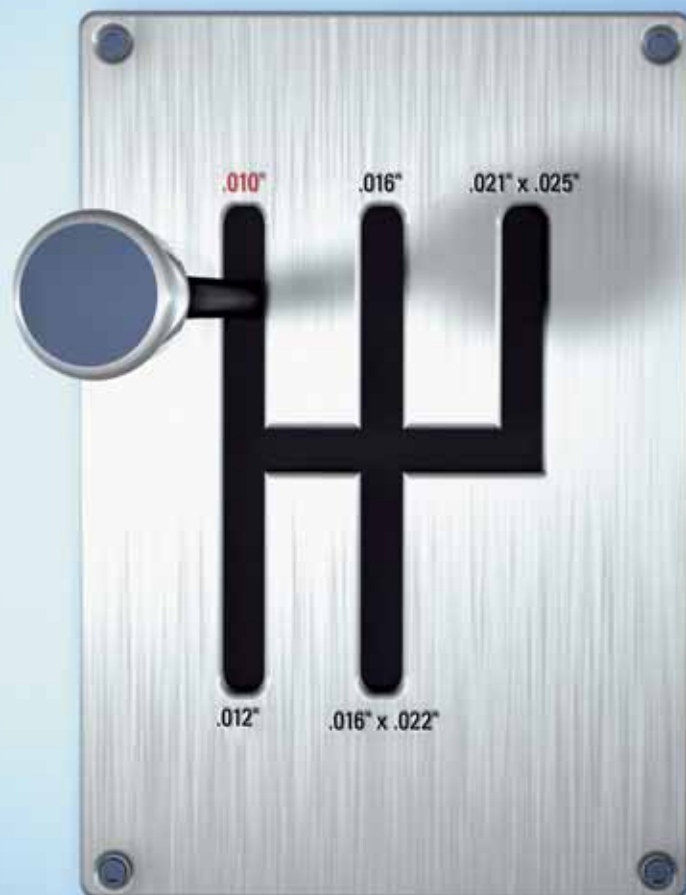
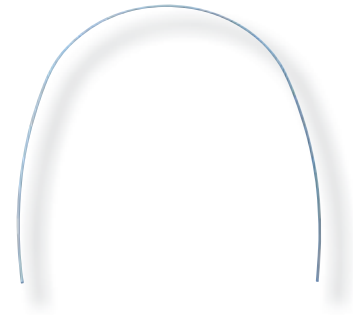


*Clinically ideal forces for safe  
and comfortable treatment.*



*Forestadent BioArchwires –  
the intelligent archwires for comfortable  
orthodontics.*

# The intelligent archwire for every treatment stage



*BioStarter®: Round archwires for a perfect start to your orthodontic treatment*

*BioTorque®: Square and Rectangular archwires for efficiency when you need to express detail*

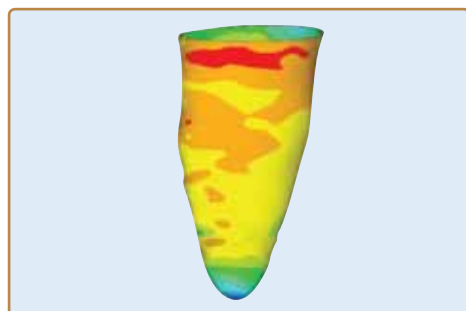
*BioFinisher®: Square archwire for perfect completion of treatment*

*BioLingual®: Round archwire for intelligent lingual treatment*

## The correct force for each treatment phase.

In orthodontics, just like in car racing, the correct application of force and torque is crucial: too much of either and you will get unwanted side effects, too little and nothing happens at all. Archwires are the engine of orthodontic tooth movement. During each treatment phase the correct choice of archwire should guarantee the correct force application. You will reach your treatment goals faster without unwanted side effects. When using BioArchwires from Forestadent you can choose the correct force levels for any stage of your treatment.

**Clinically proven.** BioArchwires are extremely flexible and express the correct gentle forces on the patients dentition. A clinical study\* confirms that the low forces expressed by BioStarter® round archwires can help to avoid resorption when the correct archwires and archwire sequence is applied. The results of the clinical study have been verified by using the Finite Element Method (please see picture).



Pressure on the root of a premolar undergoing intrusion during orthodontic treatment.

\*Wurzelresorptionen an oberen ersten Prämolaren...Rolf Faltin et al., Fortschritte der Kieferorthopädie 1998, 59:208-219 (Nr. 4)

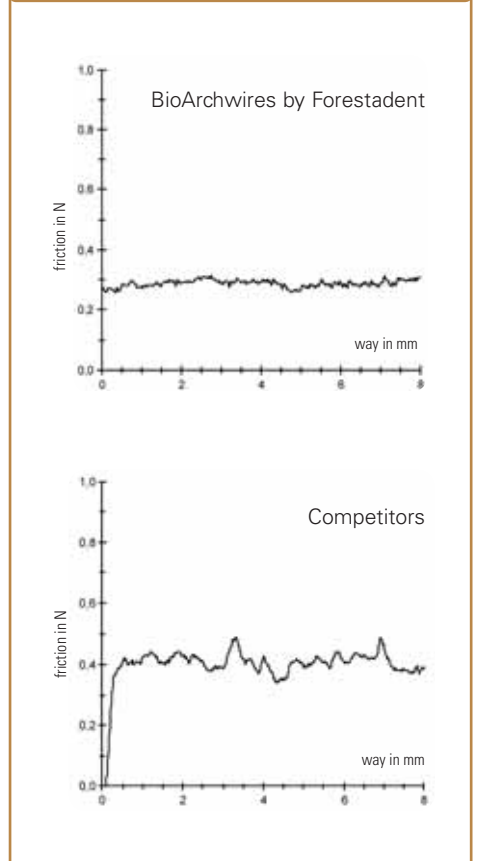
## Shape Memory – gentle treatment thanks to special alloy.

Force changes due to temperature variations are greatly reduced in the BioArchwires due to the use of a special alloy. All temperature changes are reversible. Due to this characteristic the influence of cold and hot foods and drinks results in intermittent leveling. When the forces applied by the archwire become uncomfortable for the patient a glass of cold water can almost instantly take away the discomfort.

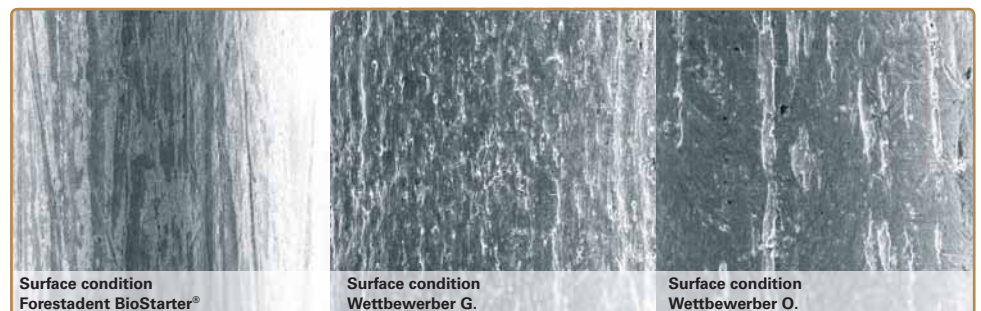
## Faster treatment progress due to efficient force application.

The uniquely smooth surface of BioArchwires reduces the friction between archwire and bracket by up to 30%. Due to the combination of the unique characteristics these intelligent wires from Forestadent® work more gently and efficiently. The orthodontic treatment will be completed faster. When using BioArchwires treatment can be completed with fewer archwires in a shorter period of time – a more economical solution for the clinician and the patient.

## Friction Values (square wire):



The smooth surface of Forestadent BioArchwires reduces the friction between archwire and bracket by up to 30%.



The uniquely smooth surface of BioStarter® and BioTorque® archwires reduces friction and allows faster and more efficient treatment progress.

**BioStarter® round 0.010" – for particularly sensitive patients**

The smallest BioStarter® archwire with the dimension 0.010" broadens the application of BioStarter® archwires even further. This archwire will work in the most adverse conditions, e.g. periodontally compromised patient and malocclusion can be corrected with the lightest of forces totally risk free and extremely gentle. Until now stranded wires with high friction and poor elasticity had to be used for these applications leading to extended treatment times. The BioStarter archwire is also suitable on sensitive and anxious patients.

**BioTorque® square and rectangular wires – Efficiency for all dimensions**

Torquing generates a high degree of bone absorption and reformation. During this process high forces are expressed on teeth which can have a damaging effect on the dentition. The new thermoactive BioTorque® archwires from Forestadent® are extremely gentle and can help to reduce long term damage. Due to the extremely precise dimensions of the Forestadent®

wires exact torquing is a lot easier. BioTorque® archwires feature the same unique surface finish as the BioStarter® archwires helping to keep friction to a minimum. Together with the extreme superelasticity BioTorque® archwires work very efficiently and super fast. BioTorque® archwires can be used in extremely difficult cases without any risk, e.g. sensitive or compromised patients.

**BioFinisher® Square archwire – for perfect completion of treatment**

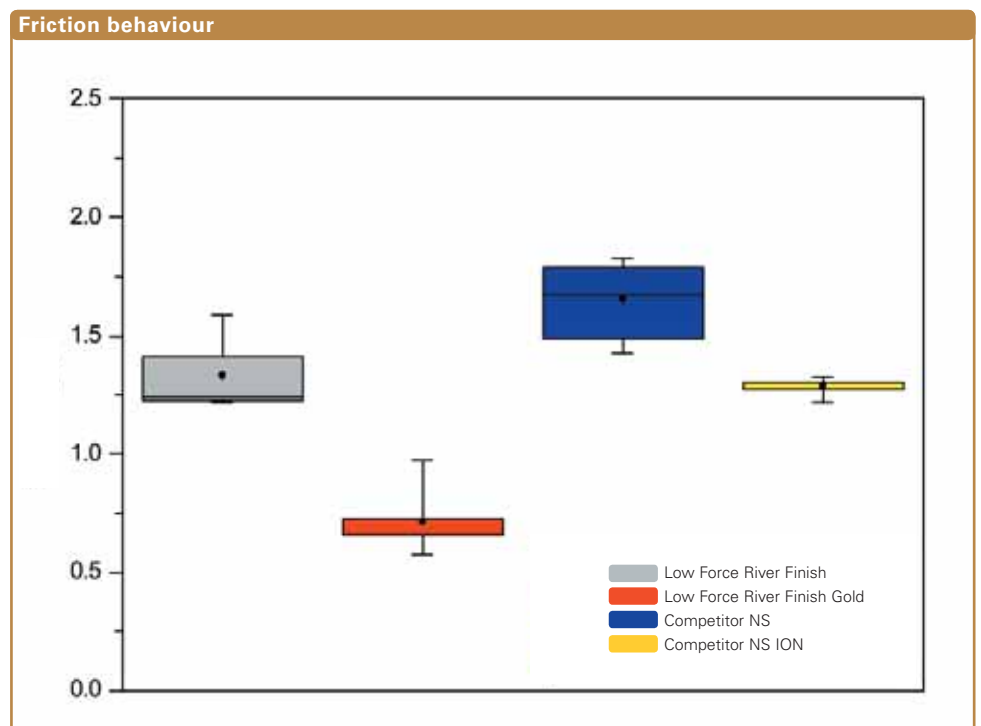
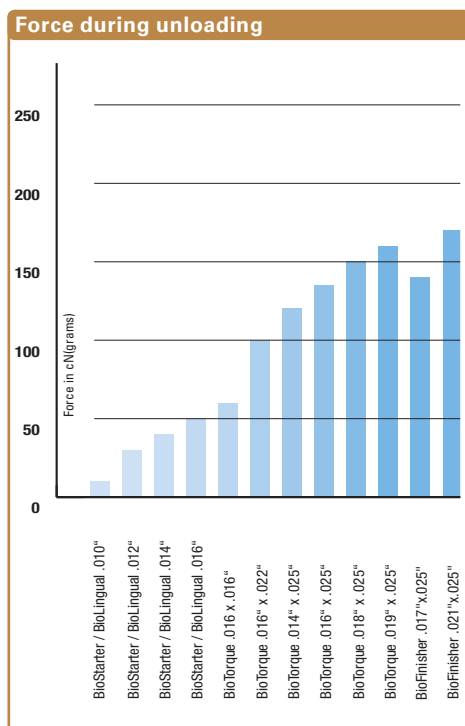
In some cases at the end of bracket treatment there is poor intercuspitation in the posterior region (caused by too little or incorrect torque) and straightening in the anterior region (caused by frequent tightening of elastic chains during diastema closure). The retruded teeth can be realigned by using the BioFinisher® at the end of treatment. The BioFinisher® is a thermosensitive archwire that virtually fills the slot. It also has a very smooth surface due to its special plasma conditioning. As the final archwire, the dimensions of the BioFinisher® ensure transfer of virtually all the preset values in each bracket.

**BioLingual® Round archwire for intelligent lingual treatment**

Thermoactive bioarchwires are not only available for the vestibular treatment of teeth but also for lingual treatment. The BioLingual® archwires are mushroom shaped and can be ordered in six different forms with four dimensions each (.010", .012", .014", und .016"). Over 200 jaws were digitally recorded for determining the optimal shapes, which provided the basis for calculating the respective arch shapes. The nickel-titanium BioLingual® archwires generate their optimal force at body temperature, in the same way as the popular BioStarter® and BioTorque® archwires.

**What are you waiting for?**

It's time for a change. Order your BioStarter®, BioTorque®, BioLingual® and BioFinisher® wires today and change to the intelligent and patient-friendly technology from Forestadent®. Forestadent® technology - for your and your patients benefit.



The effect of different surface coatings (River Finish Gold and ion implantation) on the friction behaviour in comparison with uncoated archwires.



## BioStarter® BioTorque®

Straight-arch-form



CE 0297

Euro-smile-form



CE 0297

	Profile	Force	Size	Content	Order no. max.	Order no. mand.	Order no. max.	Order no. mand.
BioStarter® archwires individually packed	●	20 g	.010"	10	203-0825	203-0925	203-1825	203-1925
	●	30 g	.012"	10	203-0830	203-0930	203-1830	203-1930
	●	40 g	.014"	10	203-0835	203-0935	203-1835	203-1935
	●	50 g	.016"	10	203-0840	203-0940	203-1840	203-1940

BioTorque® archwires individually packed	■	120 g	.014"x.025"	10	203-2035	203-2135	203-4035	203-4135
	■	60 g	.016"x.016"	10	203-1440	203-1540	203-3440	203-3540
	■	100 g	.016"x.022"	10	203-2040	203-2140	203-4040	203-4140
	■	135 g	.016"x.025"	10	203-2440	203-2540	203-4440	203-4540
	■	150 g	.018"x.025"	10	203-2046	203-2146	203-4046	203-4146
	■	150 g	.019"x.025"	10	203-2048	203-2148	203-4048	203-4148



## BioFinisher® – individually packed

Straight-arch-form



CE 0297

Euro-smile-form



CE 0297

	Profile	Dimension	Size	Content	Order No. max.	Order No. mand.	Order No. max.	Order No. mand.
	■	.017" x .025"	.018"	10	203-2044	203-2144	203-4044	203-4144
	■	.021" x .025"	.022"	10	203-2053	203-2153	203-4053	203-4153



## BioLingual® – individually packed

CE 0297

Profile	Force	Size	Content						
				Shape 1	Shape 2	Shape 3	Shape 4	Shape 5	Shape 6
●	20 g	.010"	10	270-0125	270-0225	270-0325	270-0425	270-0525	270-0625
●	30 g	.012"	10	270-0130	270-0230	270-0330	270-0430	270-0530	270-0630
●	40 g	.014"	10	270-0135	270-0235	270-0335	270-0435	270-0535	270-0635
●	50 g	.016"	10	270-0140	270-0240	270-0340	270-0440	270-0540	270-0640

BioLingual® archwires – customised packed/10pcs.

CE 0297

Profile	Force	Size	Order-no.	Content					
				Shape 1	Shape 2	Shape 3	Shape 4	Shape 5	Shape 6
●	20 g	.010"	270-0025	1	2	2	2	2	1
●	30 g	.012"	270-0030	1	2	2	2	2	1
●	40 g	.014"	270-0035	1	2	2	2	2	1
●	50 g	.016"	270-0040	1	2	2	2	2	1