

Advantages at a glance.

- **Fully aesthetic**, made of discolouration-free ceramic
- **Completely metal-free**
- **Fewer follow-up appointments** as the ligatures do not need changing
- **Shorter treatment periods** due to simpler replacement of archwires
- **Often shorter treatment periods** due to less friction
- **Comfortable to wear** – due to rounded angles and edges
- **Reduced feeling of tightness** as lower forces are possible with the archwires
- **Easier to care for** as there are no interfering ligatures to harbour debris



Reliability & precision made in Germany.

FORESTADENT is specialised in manufacturing orthodontic materials and is among the world leaders in this segment. The company was founded in 1907 as a manufacturer of jewellery and produced watches until well into the 1970's with their own movement. Even today, FORESTADENT benefits from its know-how in manufacturing minute high-precision parts in combination with advanced surface finishing.

The company has been family-run for four generations. For over 100 years, FORESTADENT has been manufacturing in its main facility in Pforzheim and meanwhile markets its products in over 80 countries.

Extensive information on the topic of orthodontic treatment is available on the Internet at www.mysmilemybraces.com.



Contact your clinician to discuss the best options for you.

FORESTADENT[®]
GERMAN PRECISION IN ORTHODONTICS

TruKlear[®] Brackets

Ultimate aesthetics
for highest demands.



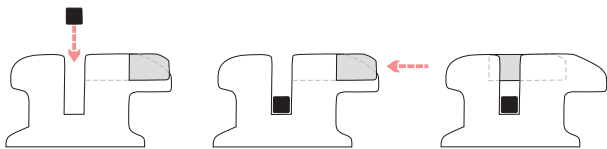
FORESTADENT[®]
GERMAN PRECISION IN ORTHODONTICS

Ultimate aesthetics for highest demands.

Male or female, young or old, never before has the group of „brace wearers“ been so different in its makeup than today. However, there is agreement on two points: the braces should be as invisible as possible and removed as quickly as possible. TruKlear Brackets go a long way to meet these demands: they are the first self-ligating brackets made completely without metal. Never before have ceramic brackets been so aesthetic and discreet.

What does “self-ligating” mean?

In principle, fixed braces consist of brackets which are bonded to the teeth, and an archwire which moves the teeth into the desired position by applying elastic pressure. In normal standard brackets the archwire is fixed with rubber rings or thin metal wires called ligatures. Ligatures act nearly like knots and prevent the bracket from sliding along the archwire easily. TruKlear Brackets do not require ligatures. A small integrated ceramic slider retains the inserted archwire in the bracket without blocking it. TruKlear Brackets virtually ligate themselves. This saves time chairside. Appointments can be reduced as the necessary changing of ligatures is dispensed with. In many cases the entire treatment period can even be shortened.



Ligating an archwire with TruKlear brackets.

Aesthetics and hygiene.

TruKlear brackets are made of a special translucent ceramic. This allows the natural colour of your teeth to shine through and thus adapts to the colour of your teeth. The clip is also made of ceramic and does not contain any metal. Perfect for aesthetics, but also practical in case of nickel intolerance. Classical ligatures are not required due to the integrated clip. This makes cleaning teeth easier for you and improves oral hygiene. Also, the ceramic is not discoloured by food or drinks. As a result, TruKlear remains virtually invisible throughout the entire treatment period.

Perfect combination.

Fixed braces do not only consist of brackets, but also include archwires. These are inserted into the brackets and provide the forces necessary to move the teeth. When deciding in favour of high-quality brackets, one should also consider archwires of corresponding quality. The FORESTADENT BioCosmetic archwires fit TruKlear especially well. They consist of an ultra-elastic metal core covered with a tooth-coloured layer of Teflon. This ensures that they remain effective and permanently white. Further information on the FORESTADENT BioCosmetic and other archwires is given in our separate “BioBögen” brochure.

